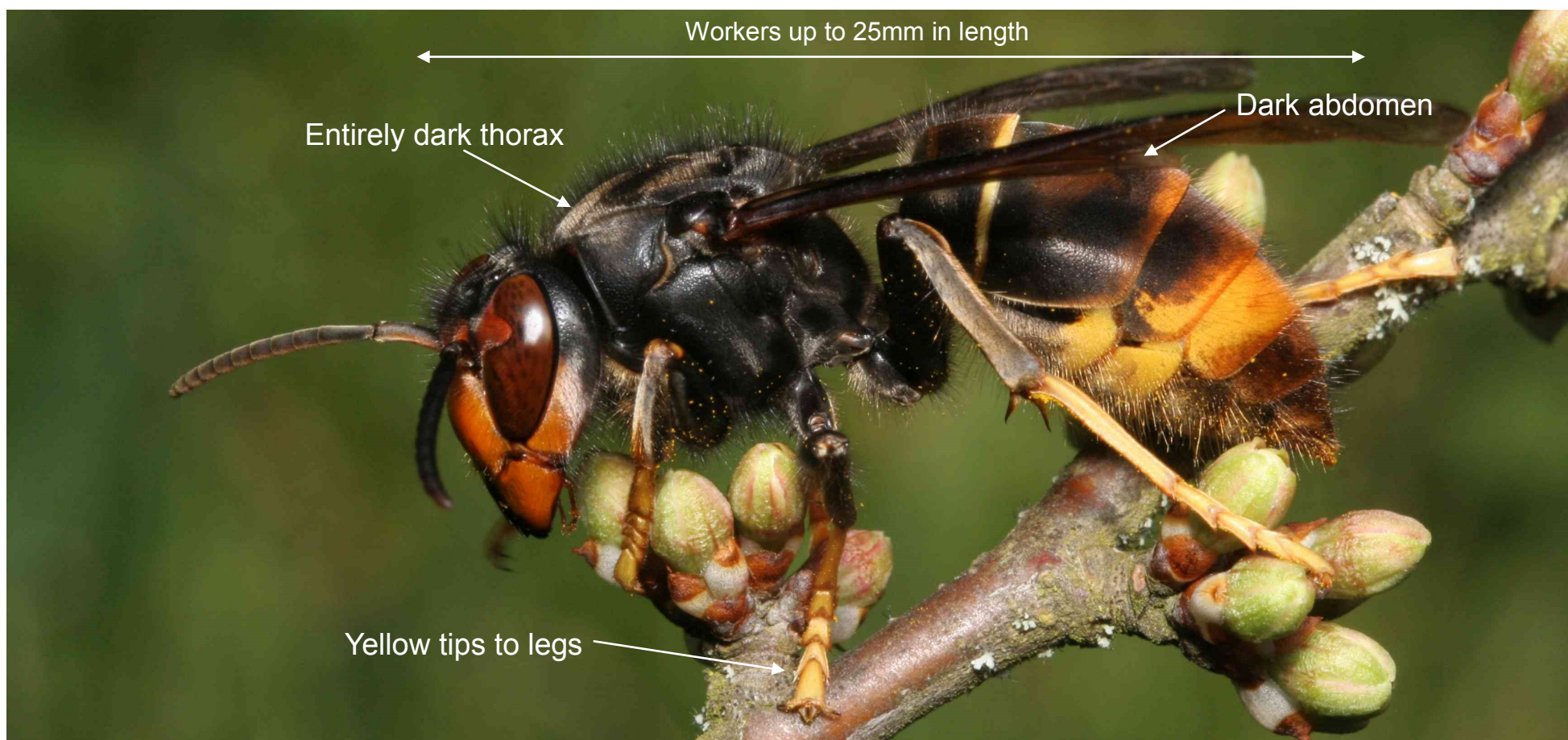


ASIAN HORNET

Vespa velutina

What is it?

An invasive non-native hornet originally from Asia. Suspected records should be reported immediately. A highly aggressive predator of native insects, posing a significant threat to honey bees and other pollinators. Accidentally introduced to France in 2004 and spreading rapidly.



Where might I see it?

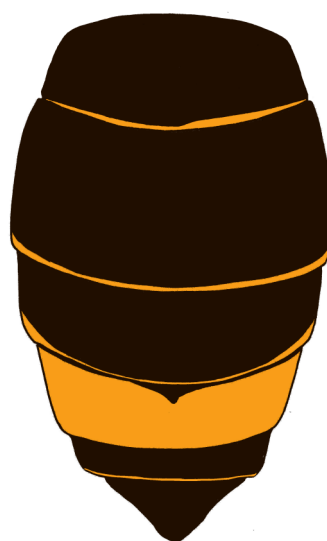
Most likely to be seen close to bee hives - bee keepers should be alert. Active from February to November in suburban areas in the south of England and Wales, or around major ports.

What does it look like?

Distinctive hornet, smaller than our native species. A key feature is the almost entirely dark abdomen, except for the 4th segment which is yellow.

- ☐ Slightly smaller than native hornet
- ☐ Dark abdomen, 4th segment yellow
- ☐ Bright yellow tips to legs (native hornet dark)
- ☐ Entirely brown or black thorax (native hornet more orange)

Asian Hornet abdomen



Native Hornet abdomen



- ☐ Makes very large nests



- ☐ 'Hawks' outside honey bee colonies killing bees as they attempt to defend their hive

DANGER!

This hornet stings. Do not disturb an active nest. Seek advice using the details below.

For more information or to report any sightings please email:

alernonnative@ceh.ac.uk